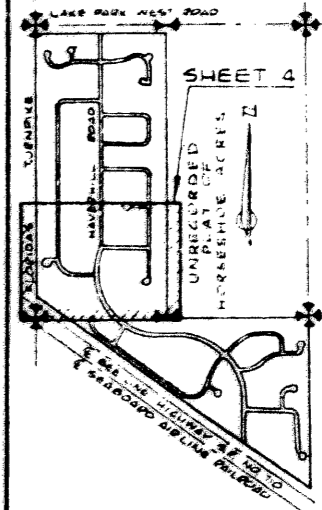
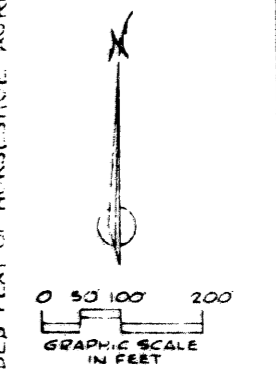
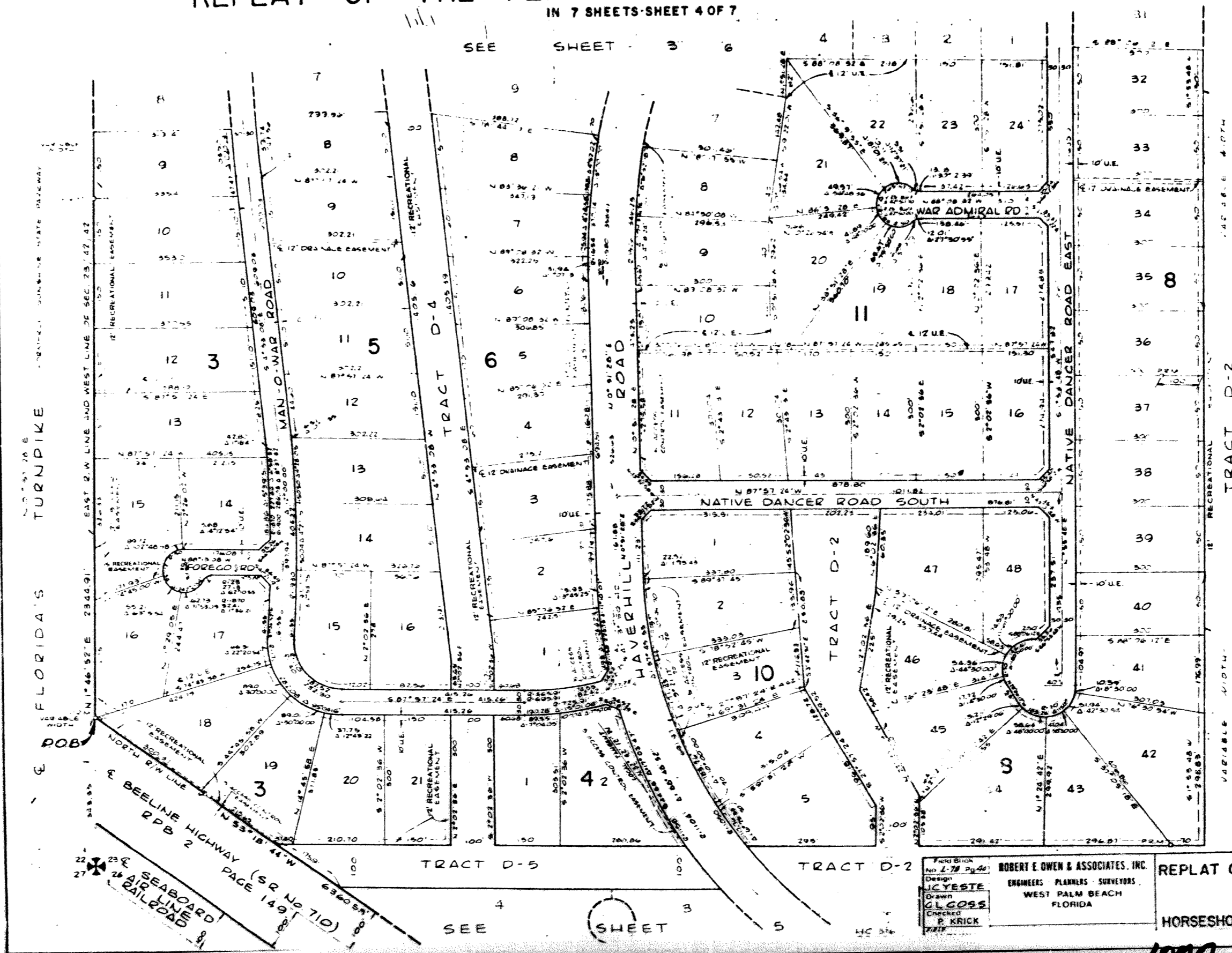


# A PLANNED UNIT DEVELOPMENT REPLAT OF THE PLAT OF HORSESHOE ACRES WEST IN 7 SHEETS-SHEET 4 OF 7

41 196  
**100**

SEE SHEET 3 6



**12621**  
81-1025

FLORIDA'S TURNPIKE  
EAST 2 1/4" LINE AND WEST LINE OF SEC. 23, 24, 27, 42  
12' RECREATIONAL EASEMENT  
MAN O WAR ROAD  
FOREGO RD  
AVERHILL RD  
NATIVE DANCER ROAD SOUTH  
NATIVE DANCER ROAD EAST  
BEELINE HIGHWAY (SR No. 710)  
SEABOARD AIR LINE RAILROAD

TRACT D-5  
TRACT D-2  
SEE SHEET 4 5

Field Book No. 4-78 Pg. 42  
Design JCYESTE  
Drawn G. CROSS  
Checked P. KRICK  
7/27

ROBERT E. OWEN & ASSOCIATES, INC.  
ENGINEERS PLANNERS SURVEYORS  
WEST PALM BEACH FLORIDA

REPLAT OF THE PLAT  
OF  
HORSESHOE ACRES WEST

DATE FEB. 1991  
SCALE 1"=100'  
SHEET 4  
OF 7

**1000-017**